



The Connection Between Early Learning Arts Strategies & Social Emotional Learning

Tuesday, May 11, 2021

Presenters: Quynn Johnson, Natasha Mirny, and Hana Morford



Young
Audiences
Arts for
Learning

Maryland

MARYLAND
WOLF TRAP

INSTITUTE FOR
EARLY LEARNING
THROUGH THE ARTS

A close-up photograph of tall grasses with a blurred background of a field and sky. The grasses are green and brown, with some seed heads visible. The background is a soft-focus landscape with a blue sky and a yellowish field.

MINDFULNESS MOMENT



Young
Audiences
Arts for
Learning
Maryland

IMPACT

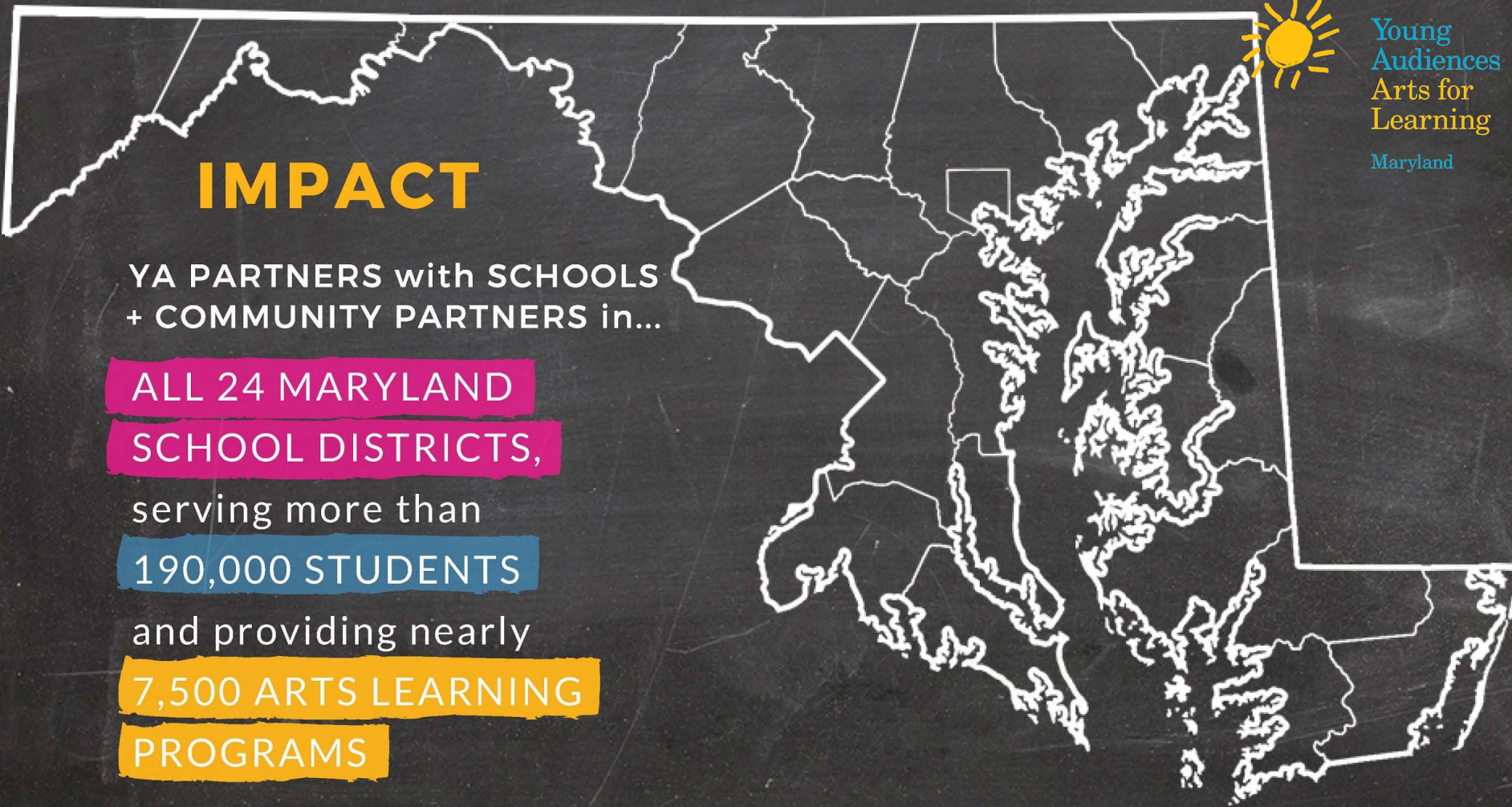
YA PARTNERS with SCHOOLS
+ COMMUNITY PARTNERS in...

ALL 24 MARYLAND
SCHOOL DISTRICTS,

serving more than
190,000 STUDENTS

and providing nearly

7,500 ARTS LEARNING
PROGRAMS



WOLF TRAP

EARLY

LEARNING

THROUGH THE

ARTS



40-YEAR TRACK RECORD



EVIDENCE-BASED PROGRAM MODELS



**STAFF AND ARTIST TRAINING TO
DELIVER MODELS**



RESEARCH OPPORTUNITIES



**A LEARNING COMMUNITY --
AFFILIATE NETWORK**



PARTNERSHIP IN ITS 8TH YEAR

We train professional
performing artists in
early childhood
development, to
become Wolf Trap
Teaching Artists

We partner
Teaching Artists
with early childhood
educators in
classroom
residencies

Wolf Trap
Teaching Artists
and teachers work
together to
integrate the arts
into daily practice
and customized
lessons

Teachers continue
to independently
incorporate arts
strategies into daily
lessons

OVERVIEW OF TODAY'S WORKSHOP

Today's artists will provide...

- A modeling of early arts strategies that promote social and emotional development in children through:
 - Ideas on how to weave the arts into the structure of a class:
 - Start and closing of class
 - Transitions
 - Use of the body and props/objects
- Introduction to Young Audience's Early Learning Video Portal:
 - Support navigating the portal
 - Connecting the artist's SEL strategies from that day with several video examples.

HOUSEKEEPING NOTES

- ❖ **This is will be an INTERACTIVE experience!**
 - Get ready to sing, imagine, dance and explore with us!
 - If you are able, please turn on your camera on.
- ❖ **Want to share a question or comment?**
 - Feel free to use the chat to share!
 - If you'd like to unmute and speak, please **write "stack"** in the chat.



SEL COMPETENCIES & the CONNECTION to the ARTS



Theater: assume a role interacting with others; use imagination to develop characters through body and voice.



Music: link singing/chanting to classroom transitions; explore use of musical instruments in the classroom



Dance: Use body to explore use of space, time, and energy; using locomotor and non-locomotor movement to convey characters, actions, and meaning

Ms. Quynn's Hello Song Lyrics

English

Hello, Hello, Hello how are you
Hello, Hello, Hello how are you
Hello up high
Hello down low
Hello to my friends
Hello oh oh
Hello

Spanish

Hola Hola Hola como estas
Hola Hola Hola como estas
Hola arriba
Hola abajo
Hola mis amigos
Hola ahh ahh
Hola



5 MINUTE BREAK



Thank you for joining our PD today!

- ❖ Please take a minute to fill out this [quick post-PD survey!](#)
- ❖ Resource Packet from today's PD [here](#).
- ❖ Check out FREE Programming Opportunities from YA!
 - **Early Learning Portal:**
<https://www.yamd.org/programs/early-learning/portal-registration/>
 - **Early Learning Access for All Streaming Events:** Virtual residencies and performance assemblies in May and June!
<https://www.yamd.org/early-learning-access-for-all/>
- ❖ **To book YA's Early Learning Programming,** contact Shana Teel at shana@yamd.org

